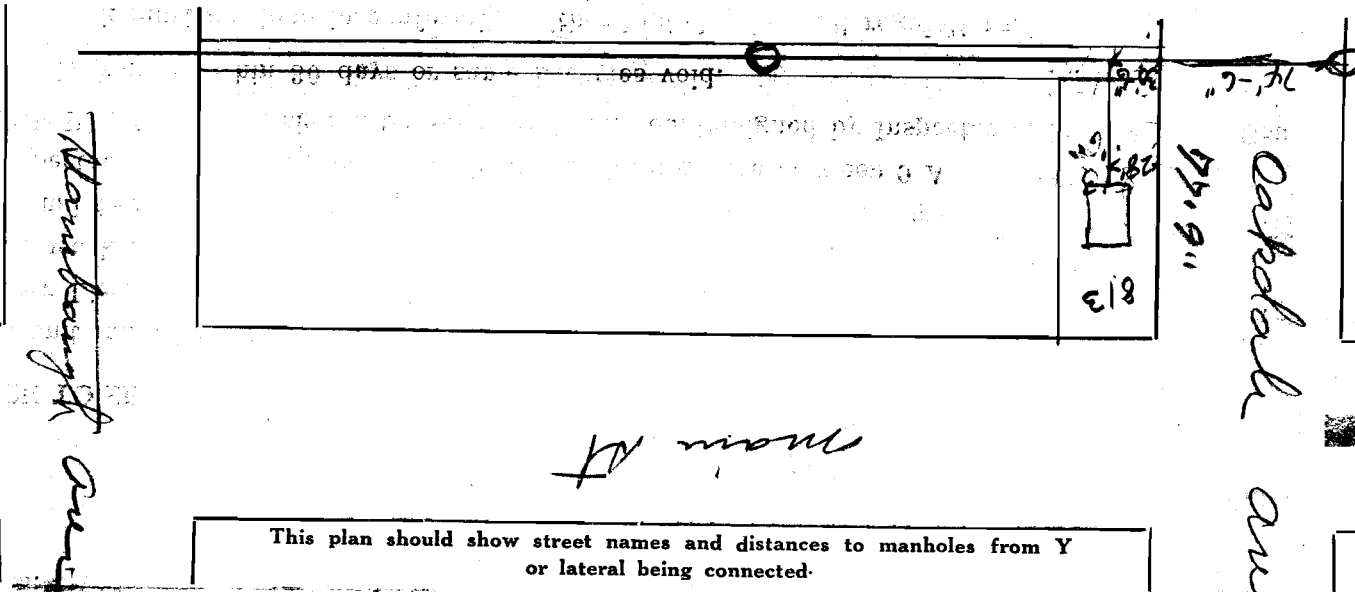


SEWER BUILDERS RETURN

I HEREBY CERTIFY that the within connection enters lot at a point 30'-6" feet north of south line of said lot and was properly made by me on 18th day of June in conformity with the specifications of Sanitary Engineering Department; that the connection was made with the recorded Y branch or connection for said lot without opening or in any way injuring the main sewer; that said connection was laid to a true and proper grade, and constructed of sound and substantial 5" vitrified sewer pipe, with the joints properly cemented and tight and that the whole was left in clean and good condition.

Measurement used was 74'-6" feet from M.H. Depth of connection at point of tap 8 ft 2"
Depth of connection at lot line 7'-2" Connection in house made to Cellar Drain
Roofwater will be is (not) conducted under my contract to

Isaac Bloomberg
Licensed Sewer Builder
Approved C. J. McCarthy
Inspector



This plan should show street names and distances to manholes from Y or lateral being connected.

Permit No. 3

Wickliff Broadview
Sewer District

SEWER CONNECTION

Lot No. 813

Subdivision Wickliff Broadview

Street Main St

Recorded in Sewer Book

Vol. 3, Pg. 29