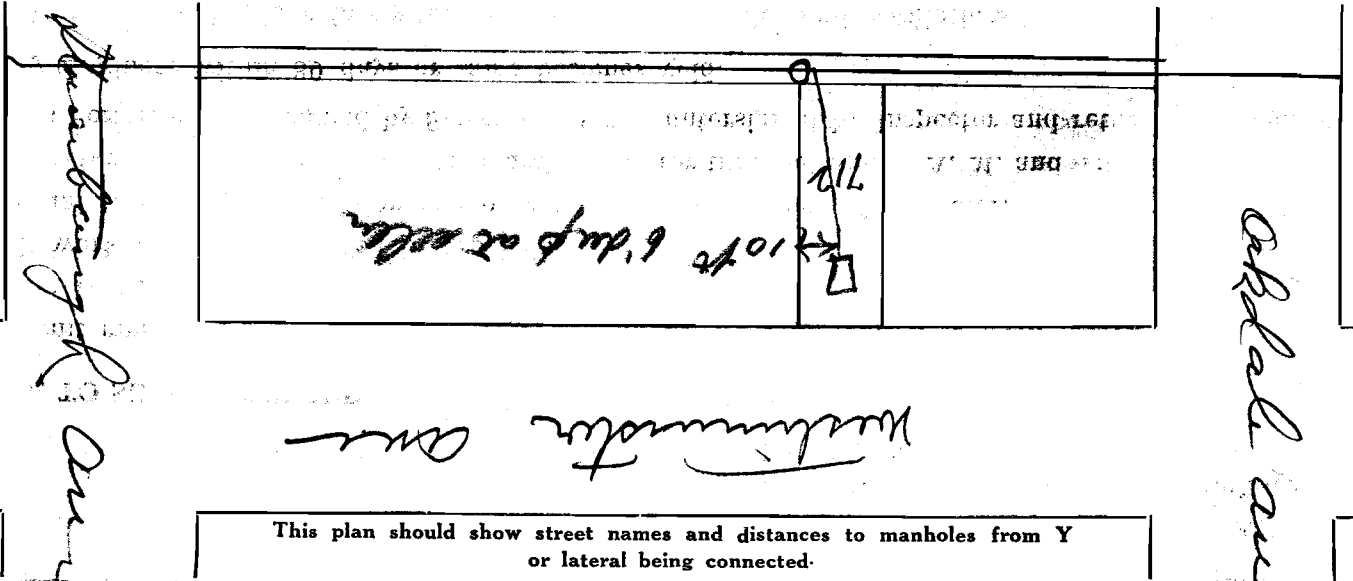


SEWER BUILDERS RETURN

I HEREBY CERTIFY that the within connection enters lot at a point 9 ft 6 in feet from North
lot line of said lot and was properly made by me on 1st day of July
in conformity with the specifications of Sanitary Engineering Department; that the connection was made with the recorded Y
branch or connection for said lot without opening or in any way injuring the main sewer; that said connection was laid to a
true and proper grade, and constructed of sound and substantial 5 in sewer pipe, with the joints properly
cemented and tight and that the whole was left in clean and good condition.

Measurement used was stake feet from..... Depth of connection at point of tap 12 ft
Depth of connection at lot line 12 Connection in house made to Bath + 2 sinks
Roofwater will be conducted under my contract to gutter in street

Approved: Harry M. Tomney Licensed Sewer Builder
O. J. McCarthy Inspector



Permit No. 7
Antietam
Sewer District

SEWER CONNECTION

Lot No. 712
Subdivision Wellsford Brothers Plat
Street Rear of lot Westminster Ave.

Recorded in Sewer Book
Vol. 3, Pg. 33

CO
THE
SHE