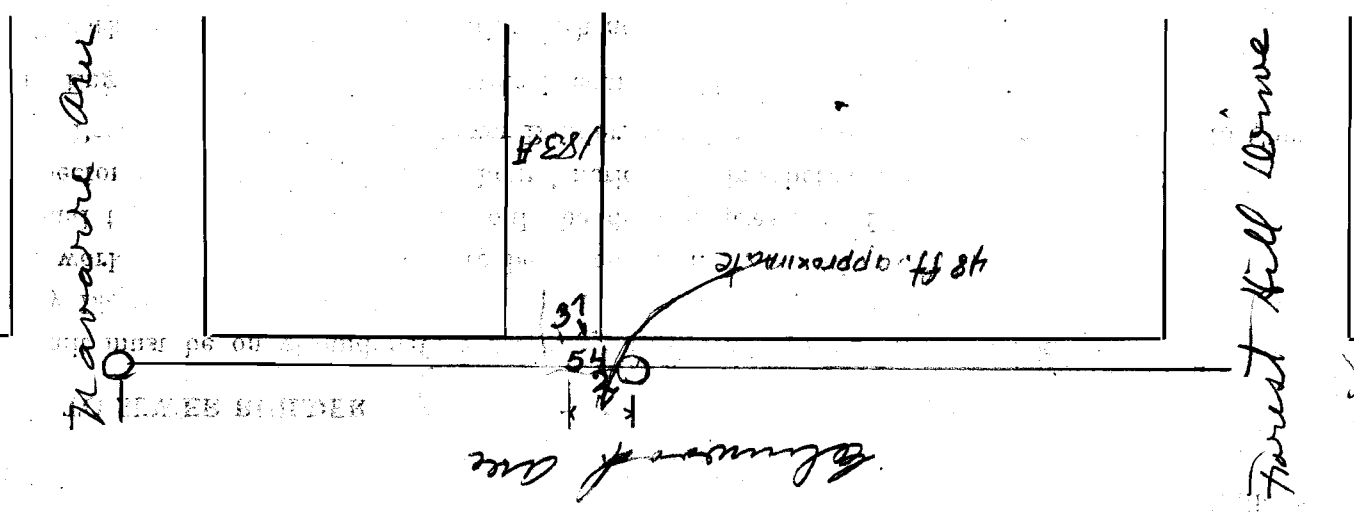


SEWER BUILDERS RETURN

I HEREBY CERTIFY that the within connection enters lot at a point 30 Thirty seven feet west of East line of said lot and was properly made by me on The 12th day of September in conformity with the specifications of Sanitary Engineering Department; that the connection was made with the recorded Y branch or connection for said lot without opening or in any way injuring the main sewer; that said connection was laid to a true and proper grade, and constructed of sound and substantial 5 in sewer pipe, with the joints properly cemented and tight and that the whole was left in clean and good condition.

Measurement used was 54 feet from manhole Depth of connection at point of tap 9 ft
Depth of connection at lot line 8 1/2 ft Connection in house made to Soil stack Sinks & Toilet Trap
Roofwater will be is (not) conducted under my contract to No Connections

The Manufacturers Co.
B. J. M. and wife Licensed Sewer Builder
Approved Albert Coope Inspector



This plan should show street names and distances to manholes from Y or lateral being connected.

Permit No. 21
Christiana Sewer District
SEWER CONNECTION
Lot No. 183A
Subdivision Wickliffe Annex
Street Columbus Ave
Recorded in Sewer Book
Vol. 3, Pg. 138

