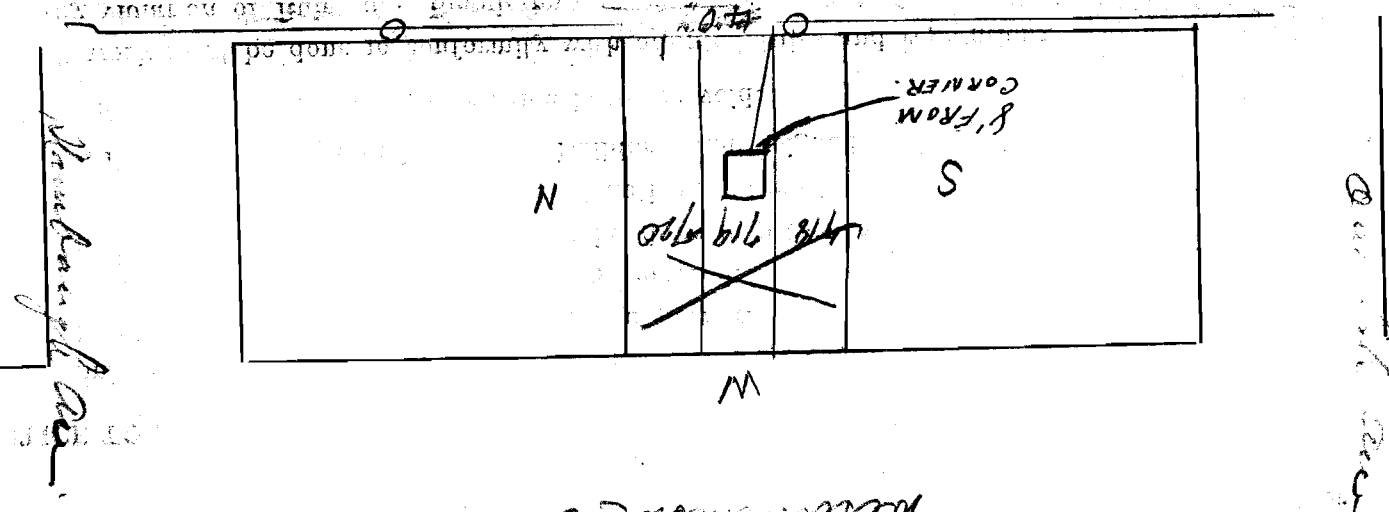


SEWER BUILDERS RETURN

I HEREBY CERTIFY that the within connection enters lot at a point 1' feet South line of said lot and was properly made by me on 9<sup>th</sup> day of Oct. 1925 in conformity with the specifications of Sanitary Engineering Department; that the connection was made with the recorded Y branch or connection for said lot without opening or in any way injuring the main sewer; that said connection was laid to a true and proper grade, and constructed of sound and substantial 5" sewer pipe, with the joints properly cemented and tight and that the whole was left in clean and good condition.

Measurement used was 40' feet from South M.H. Depth of connection at point of tap 7' 6" Depth of connection at lot line 7' 6" Connection in house made to HOUSE SEWER Roofwater ~~is~~ (not) conducted under my contract to SEWER

By MacDonald, M. J. Senior Licensed Sewer Builder  
Approved M. Hynes Inspector



This plan should show street names and distances to manholes from Y or lateral being connected.

Permit No. 28  
Sewer District Westchester  
SEWER CONNECTION 720  
Lot No. 720-719  
Subdivision Broadview Plat  
Street Westminster Ave. Line II  
Recorded in Sewer Book 3  
Vol. 3, Pg. 33