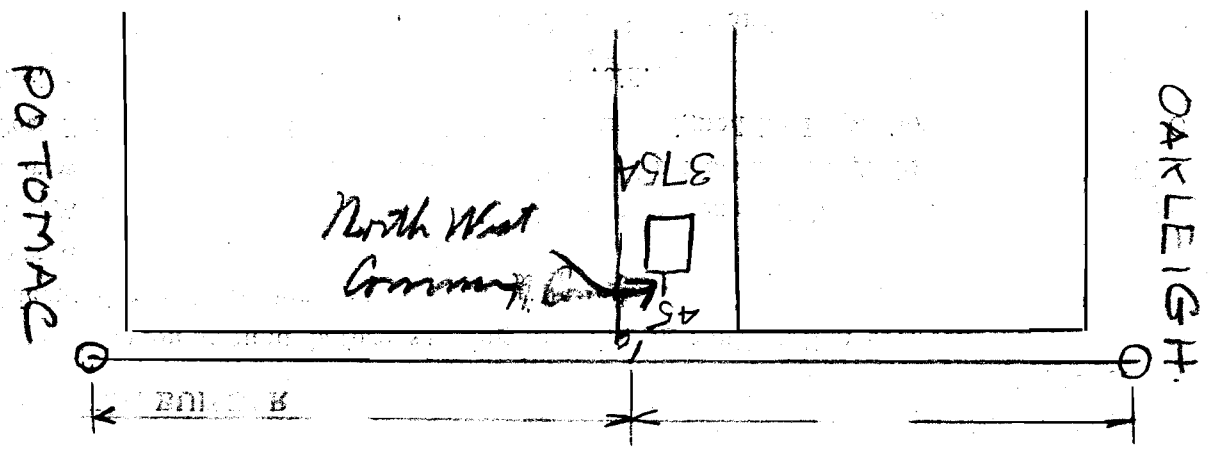


SEWER BUILDERS RETURN

I HEREBY CERTIFY that the within connection enters lot at a point 6' feet North West Common line of said lot and was properly made by me on 25<sup>th</sup> day of SEPT. 1925 in conformity with the specifications of Sanitary Engineering Department; that the connection was made with the recorded Y branch or connection for said lot without opening or in any way injuring the main sewer; that said connection was laid to a true and proper grade, and constructed of sound and substantial 5" sewer pipe, with the joints properly cemented and tight and that the whole was left in clean and good condition.

Measurement used was \_\_\_\_\_ feet from \_\_\_\_\_ Depth of connection at point of tap 9.0  
Depth of connection at lot line 8' 6" Connection in house made to HOUSE SEWER

Roofwater ~~will be~~ is (not) conducted under my contract to Sewer  
Mae Donald M<sup>rs</sup> Sonig of By J<sup>M</sup>  
Licensed Sewer Builder  
Approved O. O. McCarthy Inspector



This plan should show street names and distances to manholes from Y or lateral being connected.

Permit No. 30  
Sewer District Stanton  
SEWER CONNECTION  
Lot No. 375A  
Subdivision Wickliffe  
Street Treat Hill Drive (Sewer)  
Recorded in Sewer Book  
Vol. 3, Pg. 124