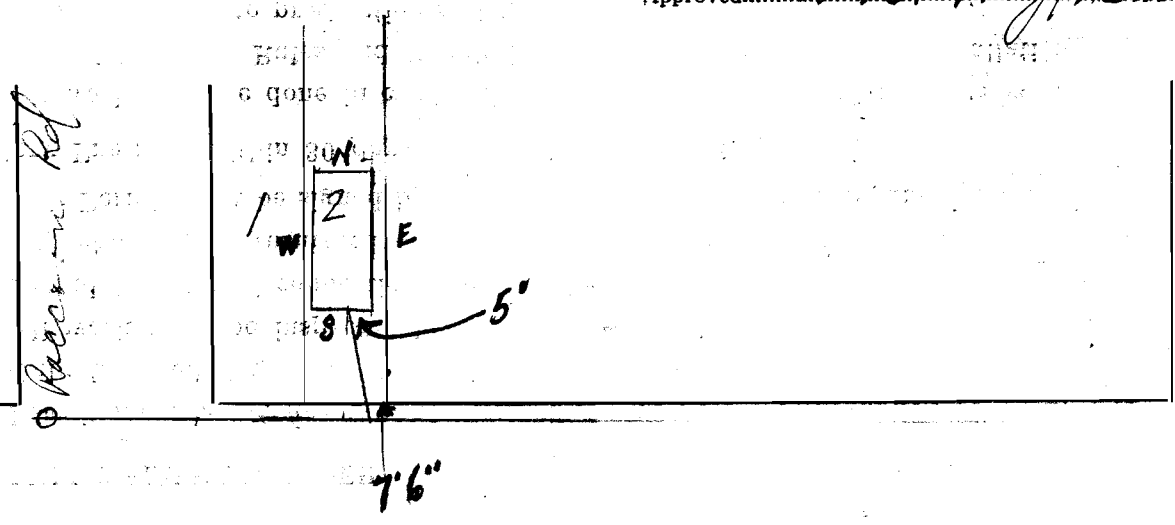


SEWER BUILDERS RETURN

I HEREBY CERTIFY that the within connection enters lot at a point 7'-6" feet West of East line of said lot and was properly made by me on 12 day of Feb., 1926 in conformity with the specifications of Sanitary Engineering Department; that the connection was made with the recorded Y branch or connection for said lot without opening or in any way injuring the main sewer; that said connection was laid to a true and proper grade, and constructed of sound and substantial vitrified sewer pipe, with the joints properly cemented and tight and that the whole was left in clean and good condition.

Measurement used was 7'-6" feet from east lot line Depth of connection at point of tap 8'-6"  
Depth of connection at lot line 7'-6" Connection in house made to house drain  
Roofwater ~~will be~~ is (not) conducted under my contract to \_\_\_\_\_

Wm. H. Hoffmann  
Licensed Sewer Builder  
Approved 2-12-26. Ray B. Bachtell  
Inspector



This plan should show street names and distances to manholes from Y or lateral being connected.

Permit No. 33  
Sewer District \_\_\_\_\_  
SEWER CONNECTION  
Lot No. 2  
Subdivision Wickliffe  
Street Meloring Ave  
Recorded in Sewer Book  
Vol. 3, Pg. 8