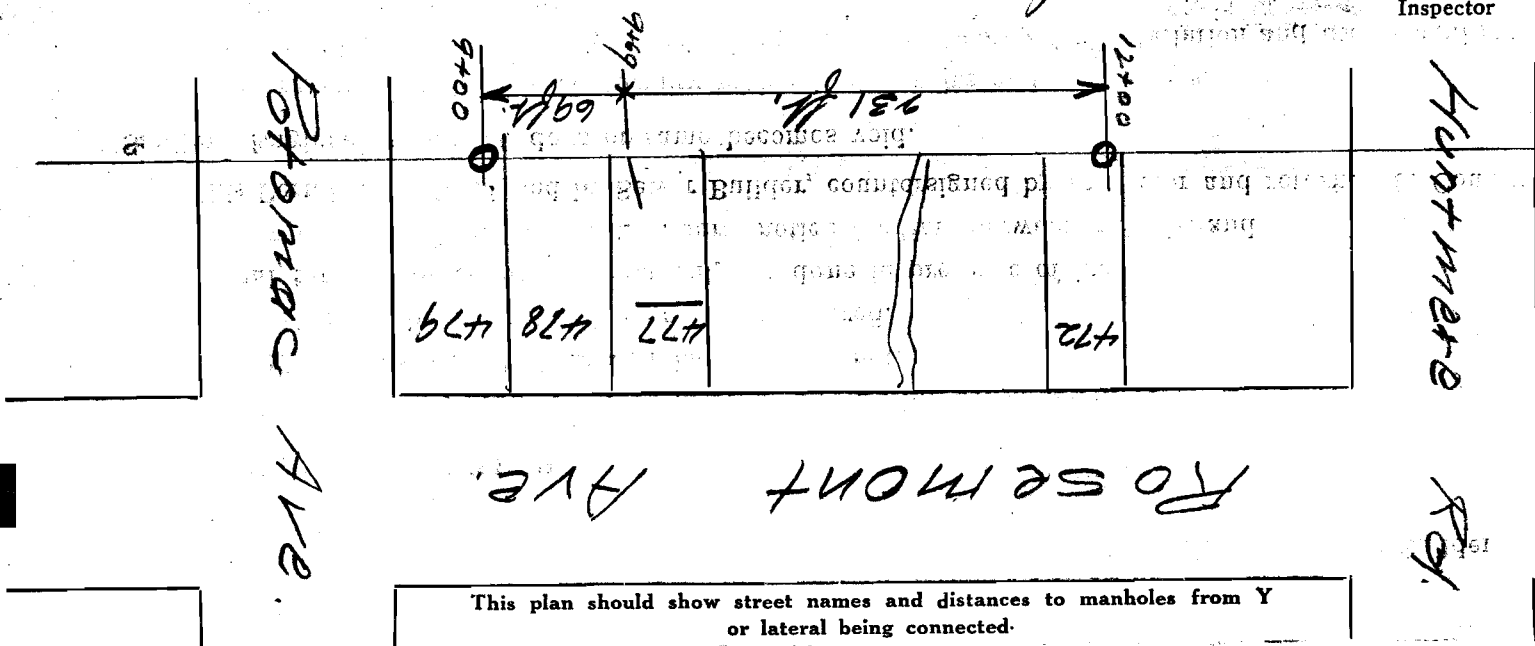


SEWER BUILDERS RETURN

I HEREBY CERTIFY that the within connection enters lot at a point 10 feet from N.E.
May 17 day of May
 line of said lot and was properly made by me on
 in conformity with the specifications of Sanitary Engineering Department; that the connection was made with the recorded Y
 branch or connection for said lot without opening or in any way injuring the main sewer; that said connection was laid to a
 true and proper grade, and constructed of sound and substantial 5" sewer pipe, with the joints properly
 cemented and tight and that the whole was left in clean and good condition.

Measurement used was 231 feet from MH-N Depth of connection at point of tap 10'
 Depth of connection at lot line 9' Connection in house made to Bath Room K.S. & C.D.
 Roofwater is (not) conducted under my contract to Run on top of Ground
E. H. Roberts
 Licensed Sewer Builder

Approved Hynes Inspector



Permit No. 44
Quintetown
 Sewer District

SEWER CONNECTION
 Lot No. 477
 Subdivision Wichita Hills
Portgate Sub. div
 Street Rosemont

Recorded in Sewer Book
 Vol. 3, Pg 33

1201
961
239