

SEWER BUILDERS RETURN

I HEREBY CERTIFY that the within connection enters lot at a point 8 ft - 6 in feet east of
west line of said lot and was properly made by me on 23^d day of July, 1926.

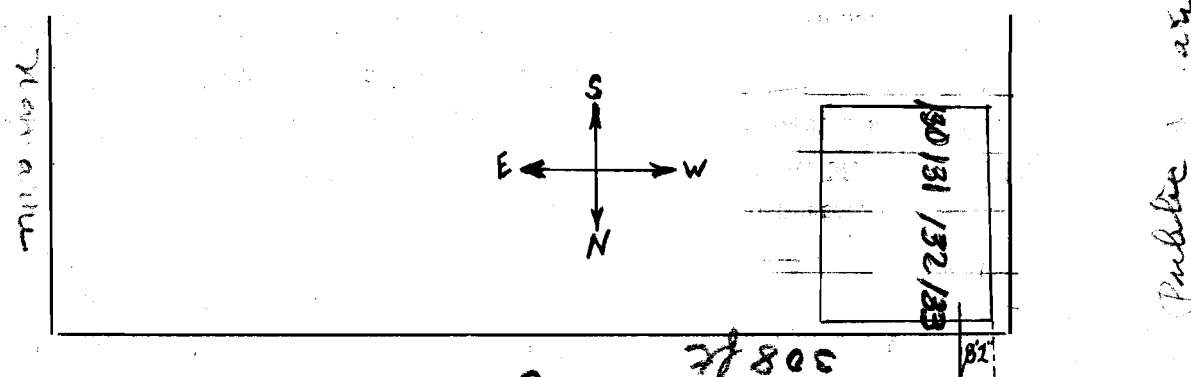
in conformity with the specifications of Sanitary Engineering Department; that the connection was made with the recorded Y
branch or connection for said lot without opening or in any way injuring the main sewer; that said connection was laid to a
true and proper grade, and constructed of sound and substantial 5" vitrified sewer pipe, with the joints properly
cemented and tight and that the whole was left in clean and good condition.

Measurement used was 308' feet from east M.H. Depth of connection at point of tap 5 ft 6 in

Depth of connection at lot line 5 ft - 4 in Connection in house made to Toilet Rooms

Roofwater will be conducted under my contract to Storm Sewer
Moss & Schmutz

Approved 7-23-26 Ray W. Backell Licensed Sewer Builder
7-24-26 Inspector



This plan should show street names and distances to manholes from Y
or lateral being connected.

Permit No. 49
Moss & Schmutz
Sewer District

SEWER CONNECTION

Lot No. (132) 133?
Subdivision Wickliffe Blvd Public
Street Wickliffe Blvd

Recorded in Sewer Book

Vol. 3, Pg. 5 and 108