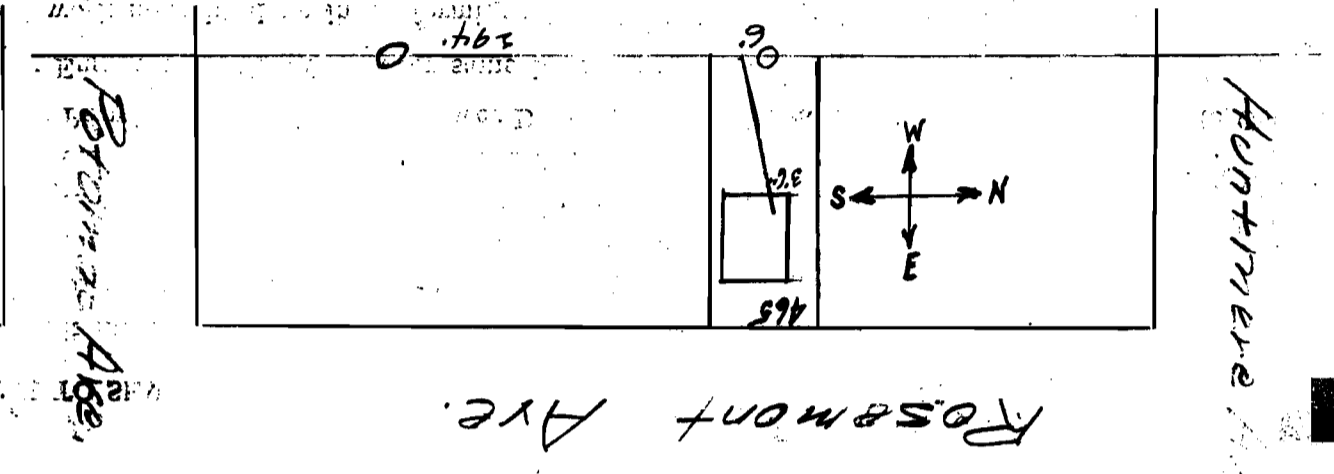


SEWER BUILDERS RETURN

I HEREBY CERTIFY that the within connection enters lot at a point 11' feet south of north line of said lot and was properly made by me on ninth day of July, 1920 in conformity with the specifications of Sanitary Engineering Department; that the connection was made with the recorded Y branch or connection for said lot without opening or in any way injuring the main sewer; that said connection was laid to a true and proper grade, and constructed of sound and substantial 5" vitrified sewer pipe, with the joints properly cemented and tight and that the whole was left in clean and good condition.

Measurement used was 6'6" feet from north M.H. Depth of connection at point of tap 4'9"
 Depth of connection at lot line 4'9" Connection in house made to house drain
 Roofwater will be is (not) conducted under my contract to _____

Approved: J. Frank Canoy Licensed Sewer Builder
7-9-20 Ray Washell Inspector



This plan should show street names and distances to manholes from Y or lateral being connected.

Permit No. 50
A. Johnston Sewer District
 SEWER CONNECTION
 Lot No. 465
 Subdivision Parquette Pub. Wk.
Wickliffe Addition
 Street Rossmont
 Recorded in Sewer Book
 Vol. 3, Pg. 126