

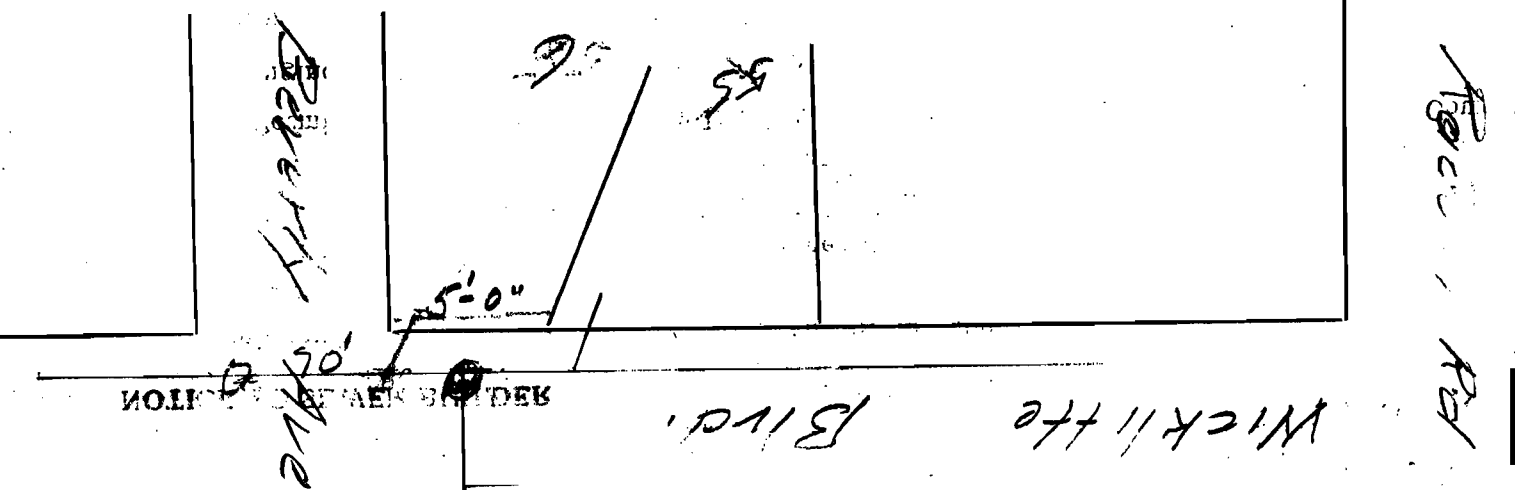
SEWER BUILDERS RETURN

I HEREBY CERTIFY that the within connection enters lot at a point 5' feet west of
16th line of said lot and was properly made by me on July, 1926
day of July, 1926
in conformity with the specifications of Sanitary Engineering Department; that the connection was made with the recorded Y
branch or connection for said lot without opening or in any way injuring the main sewer; that said connection was laid to a
true and proper grade, and constructed of sound and substantial 5" vitrified sewer pipe, with the joints properly
cemented and tight and that the whole was left in clean and good condition.

Measurement used was 70' feet from East M.H. Depth of connection at point of tap 6'-0"
Depth of connection at lot line 5'-0" Connection in house made to PLUMBING FIXTURE

Roofwater is (not) conducted under my contract to _____
Approved on by John P. ... Licensee Sewer Builder

Approved 7-16-26 Ray K. ... Inspector



This plan should show street names and distances to manholes from Y or lateral being connected.

Permit No. 52
Austintown
Sewer District
SEWER CONNECTION
Lot No. 52
Subdivision Wickliffe
Street Wickliffe
Recorded in Sewer Book
Vol. 3, Pg. 7

date of issue