

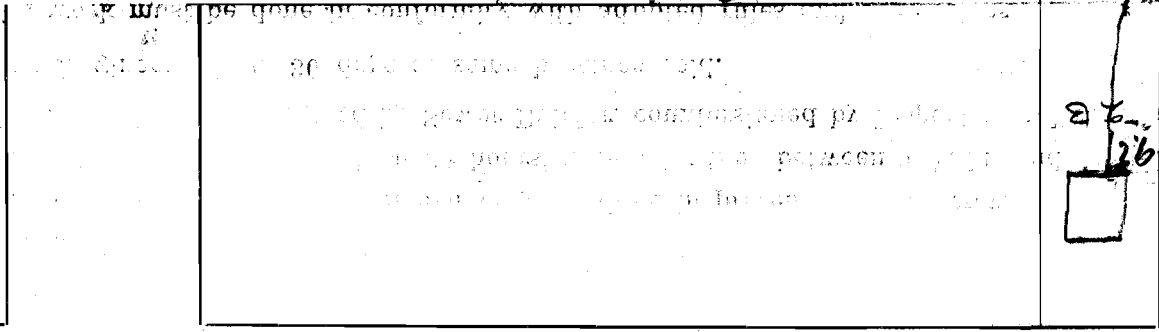
SEWER BUILDERS RETURN

I HEREBY CERTIFY that the within connection enters lot at a point 15 ft feet West of East line of said lot and was properly made by me on 4 day of Nov in conformity with the specifications of Sanitary Engineering Department; that the connection was made with the recorded Y branch or connection for said lot without opening or in any way injuring the main sewer; that said connection was laid to a true and proper grade, and constructed of sound and substantial 8" sewer pipe, with the joints properly cemented and tight and that the whole was left in clean and good condition.

Measurement used was 15 ft feet from East Depth of connection at point of tap 5.7
Depth of connection at lot line 5.7 Connection in house made to main sewer

Roofwater is (not) be conducted under my contract to Struble & Leach Co
Licensed Sewer Builder

Approved Ray Bachtell Inspector
1926



This plan should show street names and distances to manholes from Y or lateral being connected.

Permit No. 57
Amherst
Sewer District

SEWER CONNECTION

Lot No. 23
Subdivision Wickliffe
Street Rear of Wickliffe Blvd

Recorded in Sewer Book

Vol. 4, Pg. 7