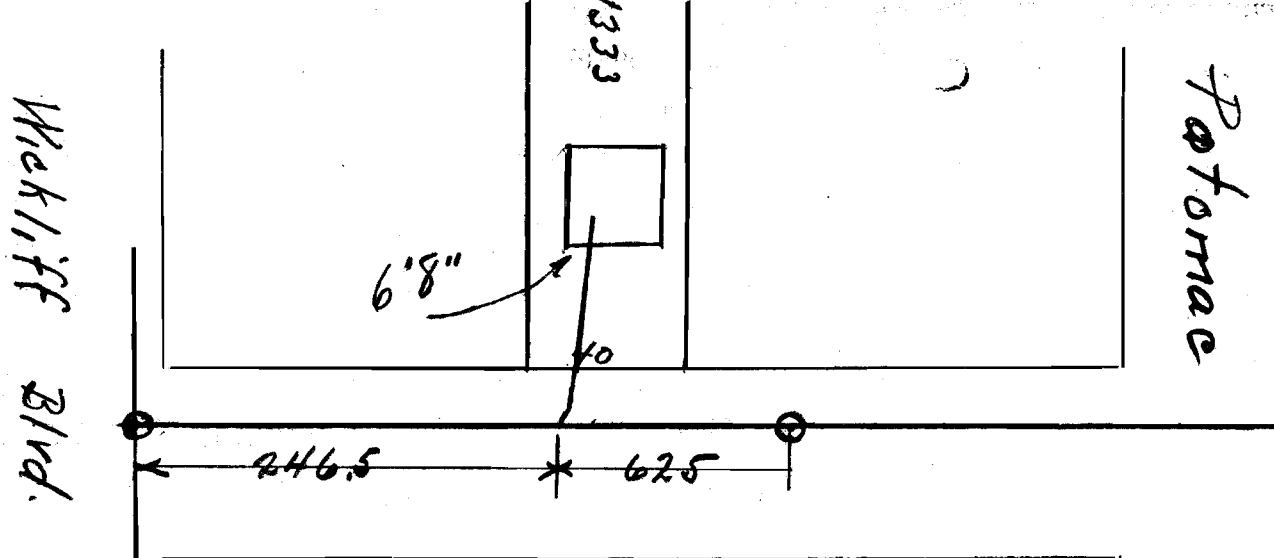


SEWER BUILDERS RETURN

I HEREBY CERTIFY that the within connection enters lot at a point 11'-6" feet South of north line of said lot and was properly made by me on 24th day of May, 1927 in conformity with the specifications of Sanitary Engineering Department; that the connection was made with the recorded Y branch or connection for said lot without opening or in any way injuring the main sewer; that said connection was laid to a true and proper grade, and constructed of sound and substantial 5" vitrified sewer pipe, with the joints properly cemented and tight and that the whole was left in clean and good condition.

Measurement used was 62 1/2 feet from S. M.H. Depth of connection at point of tap 8'-6"
 Depth of connection at lot line 6'-6" Connection in house made to house sewer
 Roofwater is (not) conducted under my contract to main sewer

E. H. Birdeman
 Licensed Sewer Builder
 Approved 5-24-27 Ray B. Bickett
 Inspector



This plan should show street names and distances to manholes from Y or lateral being connected.

Permit No. 61
Austritaran
 Sewer District

SEWER CONNECTION
 Lot No. 1333
 Subdivision Wickliffe
 Street Edgehill

Recorded in Sewer Book
 Vol. 3, Pg. 103

300
 2375