

SEWER BUILDERS RETURN

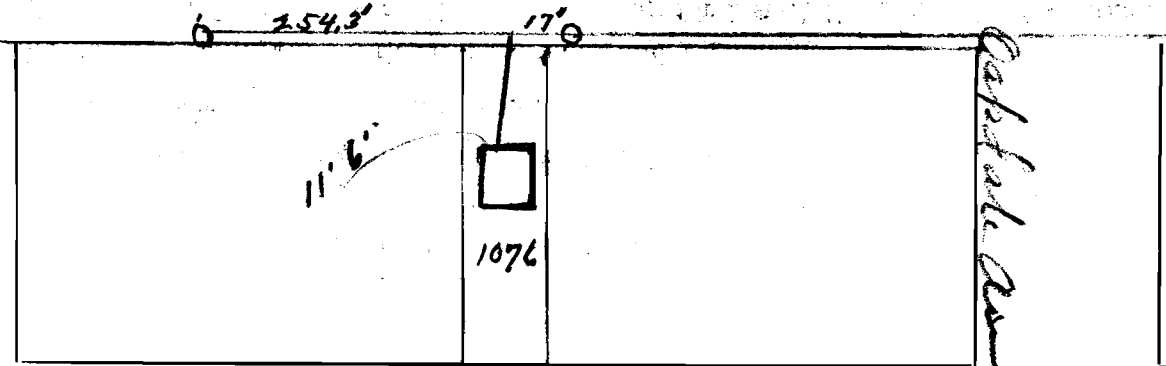
I HEREBY CERTIFY that the within connection enters lot at a point 10' feet South of North line of said lot and was properly made by me on 24-28 day of May, 1927 in conformity with the specifications of Sanitary Engineering Department; that the connection was made with the recorded Y branch or connection for said lot without opening or in any way injuring the main sewer; that said connection was laid to a true and proper grade, and constructed of sound and substantial 5" vitrified sewer pipe, with the joints properly cemented and tight and that the whole was left in clean and good condition.

Measurement used was 17 ft feet from N.M.H. Depth of connection at point of tap 8'6"
Depth of connection at lot line 8' Connection in house made to Plumbing Trenches on
Roofwater ~~will be~~ is (not) conducted under my contract to Sewer

The E. E. Johnson Co. Richard
Licensed Sewer Builder

Approved: 5-28-27. Ray M. Bachtell
Inspector

Wickliffe Blvd



Cabot Ave

This plan should show street names and distances to manholes from Y or lateral being connected.

Four mile Run

Permit No. 67

South
Sewer District

SEWER CONNECTION

Lot No. 1076

Subdivision Wickliffe Broadview

Street Between Kenner St & Four mile

Recorded in Sewer Book

Vol. 3, Pg. 10

CL. B...
A IN 10566
ONE FOR THE
THIS