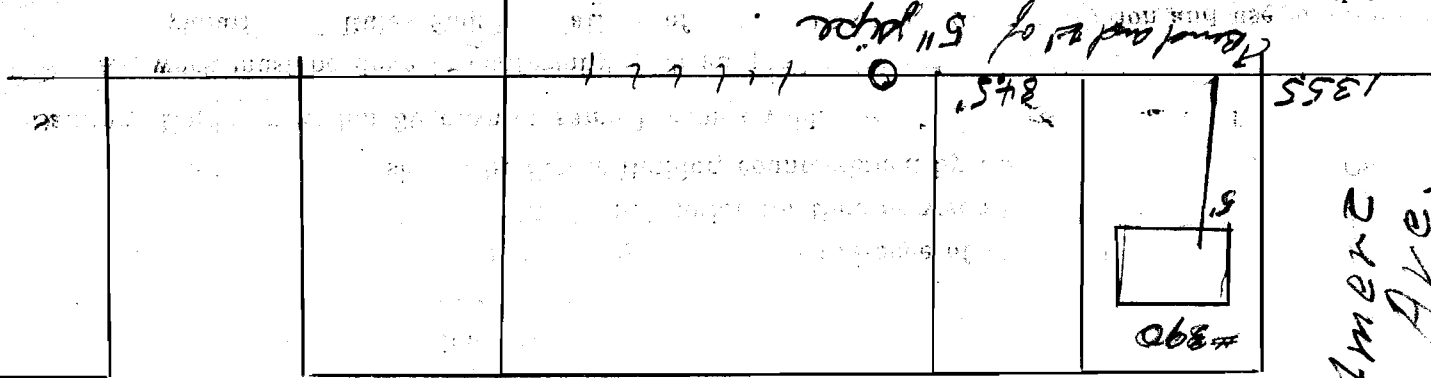


SEWER BUILDERS RETURN

I HEREBY CERTIFY that the within connection enters lot at a point 11' feet south of
north line of said lot and was properly made by me on 27th day of July, 1927
in conformity with the specifications of Sanitary Engineering Department; that the connection was made with the recorded Y
branch or connection for said lot without opening or in any way injuring the main sewer; that said connection was laid to a
true and proper grade, and constructed of sound and substantial 5" vitrified sewer pipe, with the joints properly
cemented and tight and that the whole was left in clean and good condition.

Measurement used was 84.5' feet from south end. Depth of connection at point of tap 8'6"
Depth of connection at lot line 8'6" Connection in house made to house drain

Roofwater will be conducted under my contract to Mac Donald, M. S. Longal
is (not) to main sewer. Licensed Sewer Builder
Approved 7-27-27 Ralph Kuchel Inspector



ROSEMONT AVE

Huntmer Ave.

This plan should show street names and distances to manholes from Y or lateral being connected.

Permit No. 68

Quintana
Sewer District

SEWER CONNECTION

Lot No. 390

Subdivision Wichiffe Park
Street Between Belmont & Main

Recorded in Sewer Book

Vol. 3, Pg. 23

