

SEWER BUILDERS RETURN

I HEREBY CERTIFY that the within connection enters lot at a point 18'3" feet south of north line of said lot and was properly made by me on 6th day of Aug., 1927

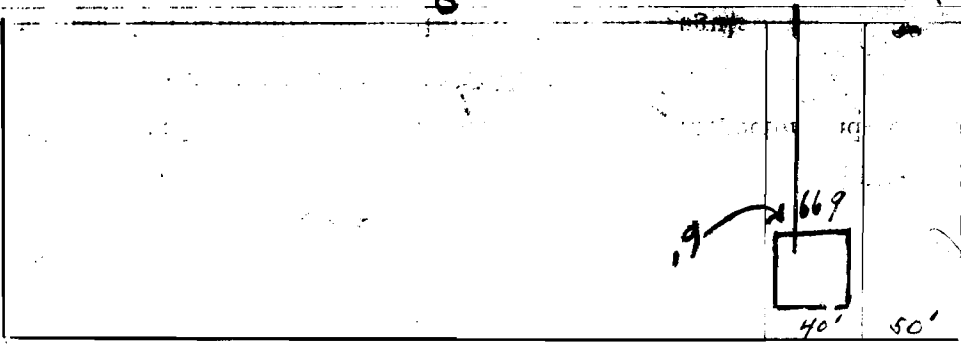
in conformity with the specifications of Sanitary Engineering Department; that the connection was made with the recorded 5" vitrified branch or connection for said lot without opening or in any way injuring the main sewer; that said connection was laid to a true and proper grade, and constructed of sound and substantial 5" vitrified sewer pipe, with the joints properly cemented and tight and that the whole was left in clean and good condition.

Measurement used was 92'4" feet from north M.H. Depth of connection at point of tap 7'6"

Depth of connection at lot line 7'6" Connection in house made to house drain

Roofwater ^{will be} is (not) conducted under my contract to

R. C. Blomberg Licensed Sewer Builder
Approved 8-6-27 Ray S. Sachtell Inspector



Permit No. 73
Quadrant
Sewer District

SEWER CONNECTION

Lot No. 669
Subdivision Wickliffe-Engel
Street Road Westminister

Recorded in Sewer Book

Vol. 13, Pg. 39

RECORDED
INDEXED
AUG 10 1927
CITY OF CLEVELAND