

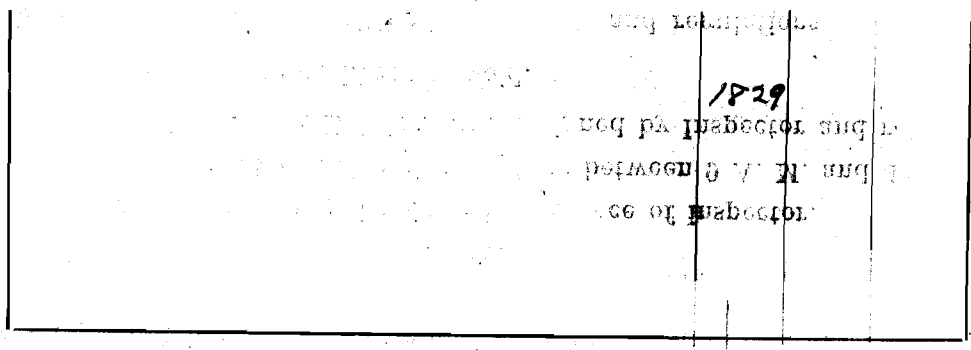
SEWER BUILDERS RETURN

I HEREBY CERTIFY that the within connection enters lot at a point 6'9" feet north of South Lot line of said lot and was properly made by me on 12<sup>th</sup> day of Aug., 1927 in conformity with the specifications of Sanitary Engineering Department; that the connection was made with the recorded Y branch or connection for said lot without opening or in any way injuring the main sewer; that said connection was laid to a true and proper grade, and constructed of sound and substantial 5 in. sewer pipe, with the joints properly cemented and tight and that the whole was left in clean and good condition.

Measurement used was 204 feet from Manhole South Depth of connection at point of tap 9 ft Depth of connection at lot line 5-4 Connection in house made to Soil Pipe house drain Roofwater will be is (not) conducted under my contract to is (not)

W. M. Hoffman Licensed Sewer Builder  
Approved 8-12-27 Ray Bachtel Inspector

W. M. Hoffman



SEWER BUILDERS

Requirements Plan

This plan should show street names and distances to manholes from Y or lateral being connected.

Permit No. 74  
W. M. Hoffman  
Sewer District

SEWER CONNECTION

Lot No. 1829  
Subdivision Wichita-Commercial  
Street Lexington

Recorded in Sewer Book

Vol. 3, Pg. 143