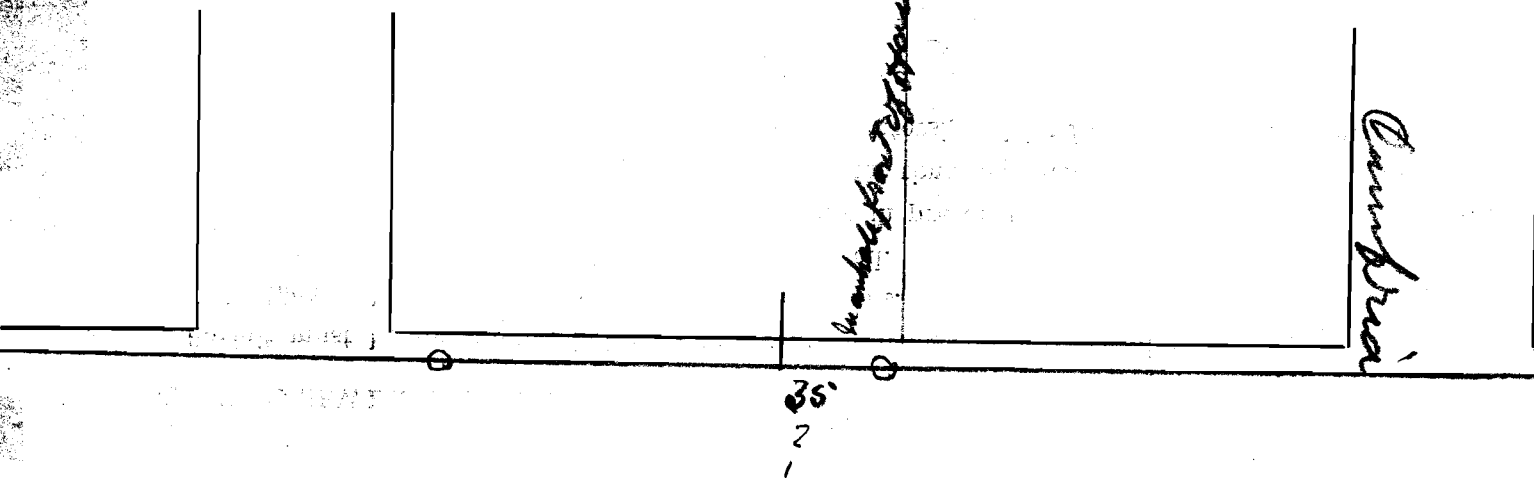


SEWER BUILDERS RETURN

I HEREBY CERTIFY that the within connection enters lot at a point 80 feet East West Lot line of said lot and was properly made by me on Sept day of Sept 26 in conformity with the specifications of Sanitary Engineering Department; that the connection was made with the recorded Y branch or connection for said lot without opening or in any way injuring the main sewer; that said connection was laid to a true and proper grade, and constructed of sound and substantial 5 sewer pipe, with the joints properly cemented and tight and that the whole was left in clean and good condition.

Measurement used was 57 feet from E of Manhole Depth of connection at point of tap 7
 Depth of connection at lot line 4 Connection in house made to _____
 Roofwater will be _____
 is (not) conducted under my contract to _____

Approved W. M. Hoffman Licensed Sewer Builder
W. M. Hynes Inspector



This plan should show street names and distances to manholes from Y or lateral being connected.

Permit No. 90
Amsterton - 10th Street
 Sewer District

SEWER CONNECTION

Lot No. 10 Amstert G L
 Subdivision Amsterton Prop
 Street 10th Street Ave East

Recorded in Sewer Book

Vol. 3, Pg. 148