

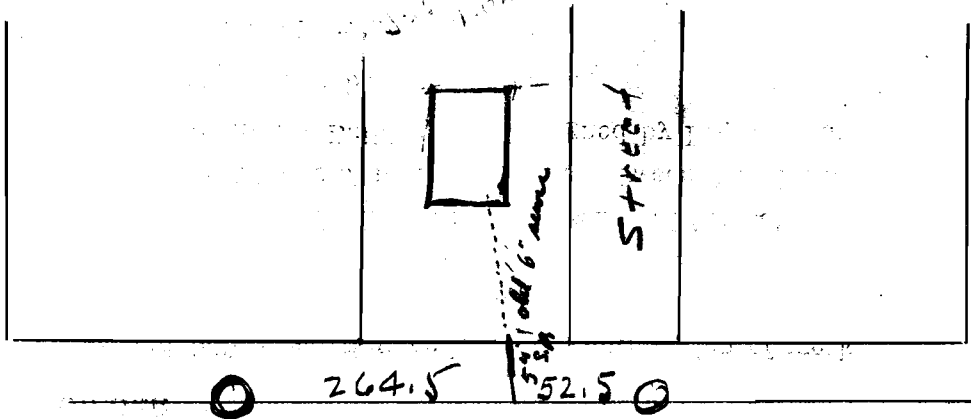
SEWER BUILDERS RETURN

I HEREBY CERTIFY that the within connection enters lot at a point 32-4 feet W. of
South line of said lot and was properly made by me on 5th day of Oct., 1927.
 in conformity with the specifications of Sanitary Engineering Department; that the connection was made with the recorded Y
 branch or connection for said lot without opening or in any way injuring the main sewer; that said connection was laid to a
 true and proper grade, and constructed of sound and substantial 5" vit. sewer pipe, with the joints properly
 cemented and tight and that the whole was left in clean and good condition.

Measurement used was 52-5 feet from W. M. H. Depth of connection at point of tap 9 ft
 Depth of connection at lot line 4 ft Connection in house made to house drain
 Roofwater will be is (not) conducted under my contract to to surface

W. M. Hoffmann
 Licensed Sewer Builder

Approved 10-5-27 Ray Baskett
 Inspector



Moham 129
Ave

Raccoon Rd.

This plan should show street names and distances to manholes from Y or lateral being connected.

Permit No. 96
Amsterdam
 Sewer District

SEWER CONNECTION
 Lot No. Gr. h. 10
 Subdivision Amsterdam Top
 Street Raccoon Rd.

Recorded in Sewer Book
 Vol. 3, Pg. 150

392.5
340
52.5
657
392.5
264.5
52.5
340
657.0