

SEWER BUILDERS RETURN

I HEREBY CERTIFY that the within connection enters lot at a point 7¹⁷ feet from South line of said lot and was properly made by me on 7¹⁷ day of Oct., 1927

in conformity with the specifications of Sanitary Engineering Department; that the connection was made with the recorded Y branch or connection for said lot without opening or in any way injuring the main sewer; that said connection was laid to a true and proper grade, and constructed of sound and substantial 5" vit sewer pipe, with the joints properly cemented and tight and that the whole was left in clean and good condition.

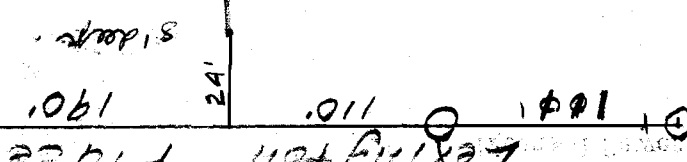
Measurement used was 110 feet from Manhole Depth of connection at point of tap 8 ft
Depth of connection at lot line 8 ft Connection in house made to Bath, with stop cock
Roofwater is (not) conducted under my contract to United Pfg Co by W. H. Adams

Approved 10-7-27 Ray Bennett
Licensed Sewer Builder

Inspector Wickel/143-e
B. 1201

Dorridge Ave

7581



This plan should show street names and distances to manholes from Y or lateral being connected.

Permit No. 100

Quintman
Sewer District

SEWER CONNECTION

Lot No. 1854

Subdivision Wickel/143-e (Commercial Sub)

Street Lexington Place

Recorded in Sewer Book

Vol. 3, Pg. 143

007
001
011
001